

**TD** | TOUCH  
DRIVE

Feel the difference.

Production Switcher Control Panels



**ROSS**

# Evolution, not revolution

TouchDrive™ is the next step in Ross Video's switcher story. As production requirements have grown, our switchers have evolved to keep pace. TouchDrive™, the latest step in this evolution, is a tribute to the feedback from thousands of Technical Directors and Vision Mixers around the world.



# Production control **redefined**

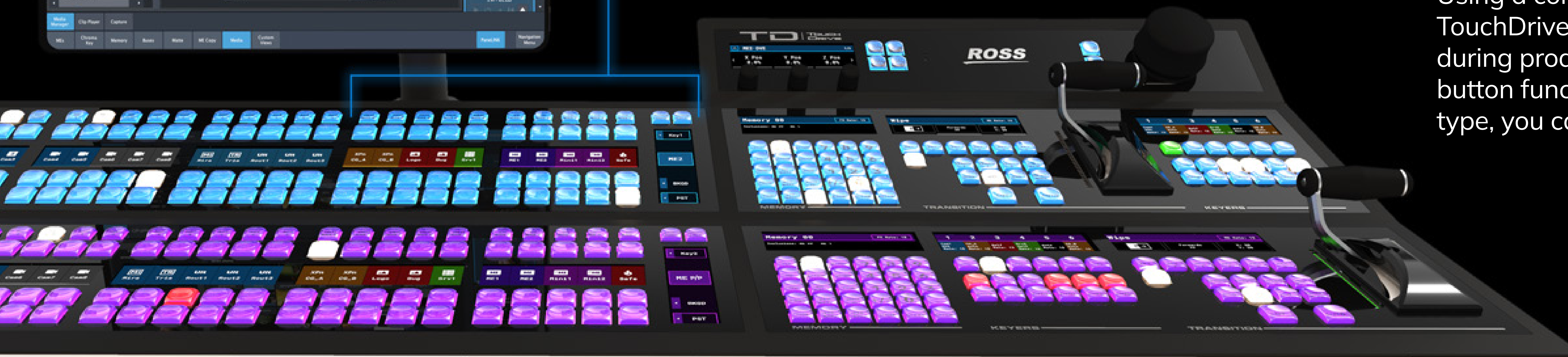
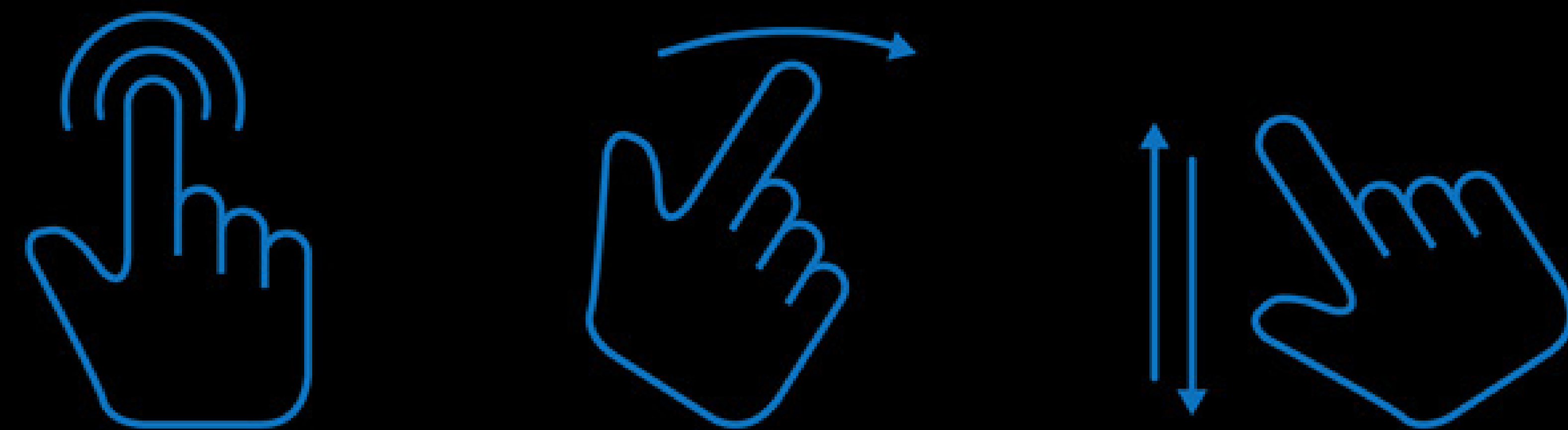
## **Complemented by Touch**

Modern production switchers are more powerful and feature-rich than ever, and they require control panels that provide access to these functions efficiently. Rather than complicating operations, we have designed a control panel that provides access to these functions in a clear and concise manner. Every hi-res LCD display uses touch technology that keeps the panel footprint manageable and greatly enhances efficiency.

- Gestures - Swipe to select functions and parameters
- TouchMap™ - Create bus maps with absolute ease
- Memory Inclusions - Know which elements are included in the memory recall
- Instant visual feedback enhances operator confidence

## **Clear Visual Cues**

Using a combination of rich color, clear text and touch displays, TouchDrive™ provides you with all the pertinent information you need during production. Whether you are configuring bus maps, assigning button functions, delegating key buses or selecting your next transition type, you can operate with absolute confidence.



# Operational efficiency

## Surprisingly Familiar

Despite its many innovations and improvements, if you have operated a Ross Video switcher, you will feel right at home on TouchDrive™. It gives you what you are used to, and so much more. We wanted to be sure our thousands of loyal customers would still enjoy the “Ross experience”.

## Built-in Dashboard

A separate Dashboard computer is no longer required. An optional industrial grade 15.6” touchscreen is available that draws power directly from the panel for simpler cabling.

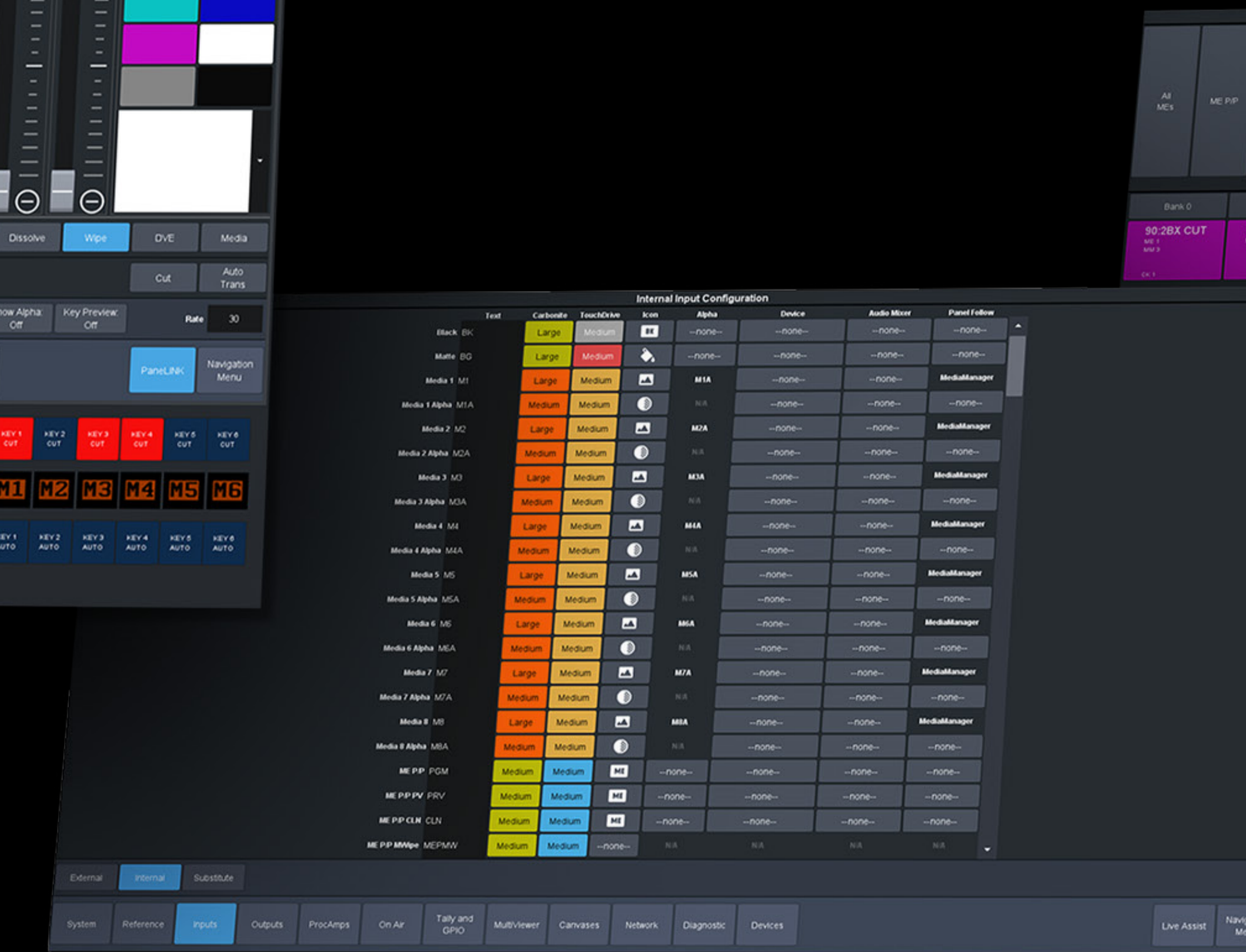
## Unprecedented Control

DashBoard provides tight integration between TouchDrive™ and all your other production devices. The Live Assist DashBoard screen auto follows panel operations. TouchDrive™ does not just control your switcher – it allows you to have the entire production at your fingertips.

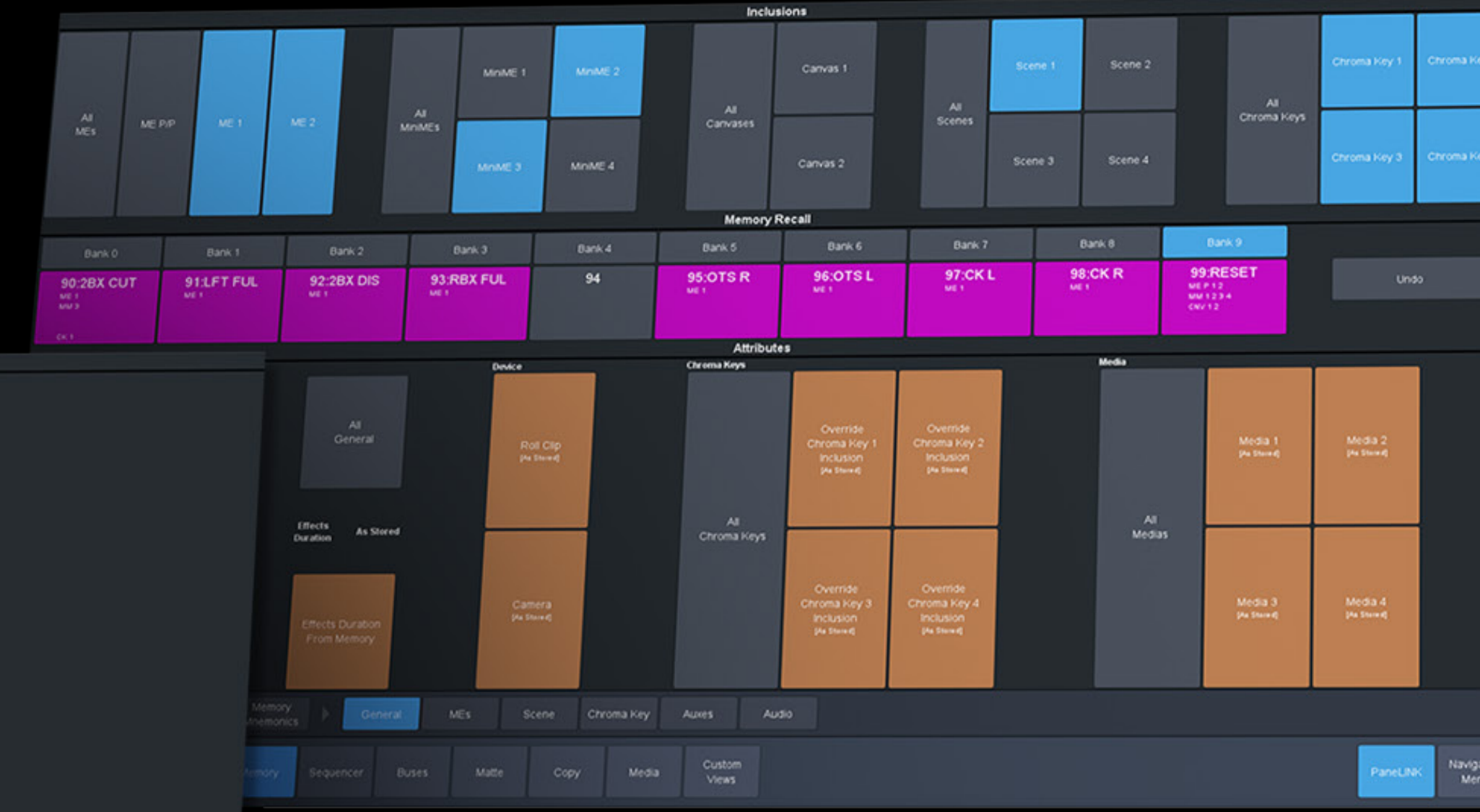
With TouchDrive™, you can playout XPression graphics, trigger Tria+ video clips or switch Ultrix crosspoints with ease. In fact, virtually any device can be controlled by DashBoard and integrated into TouchDrive™. This unprecedented consolidation of device control is simple and efficient – another Ross innovation.



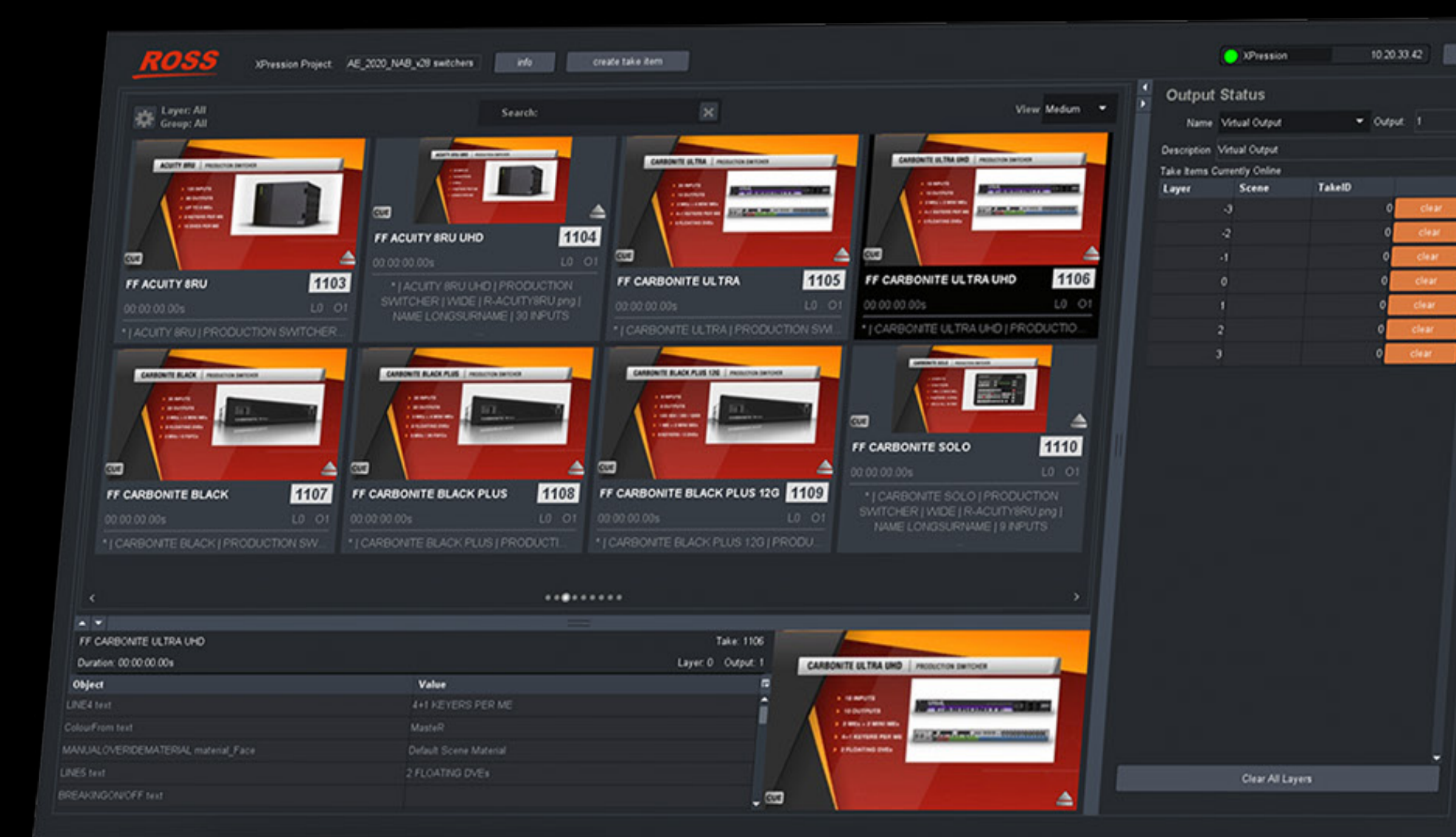
SoftPanel



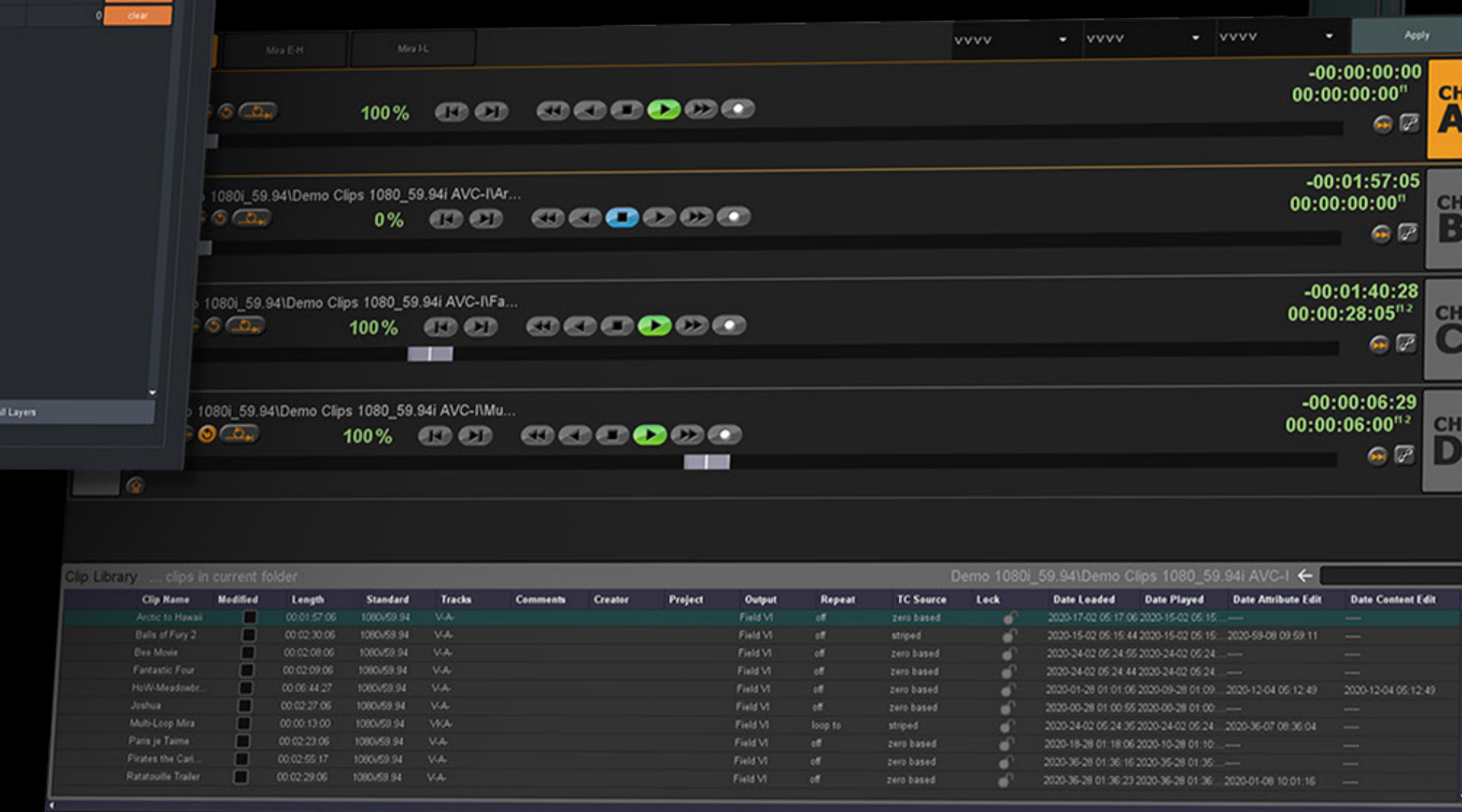
Input Configuration



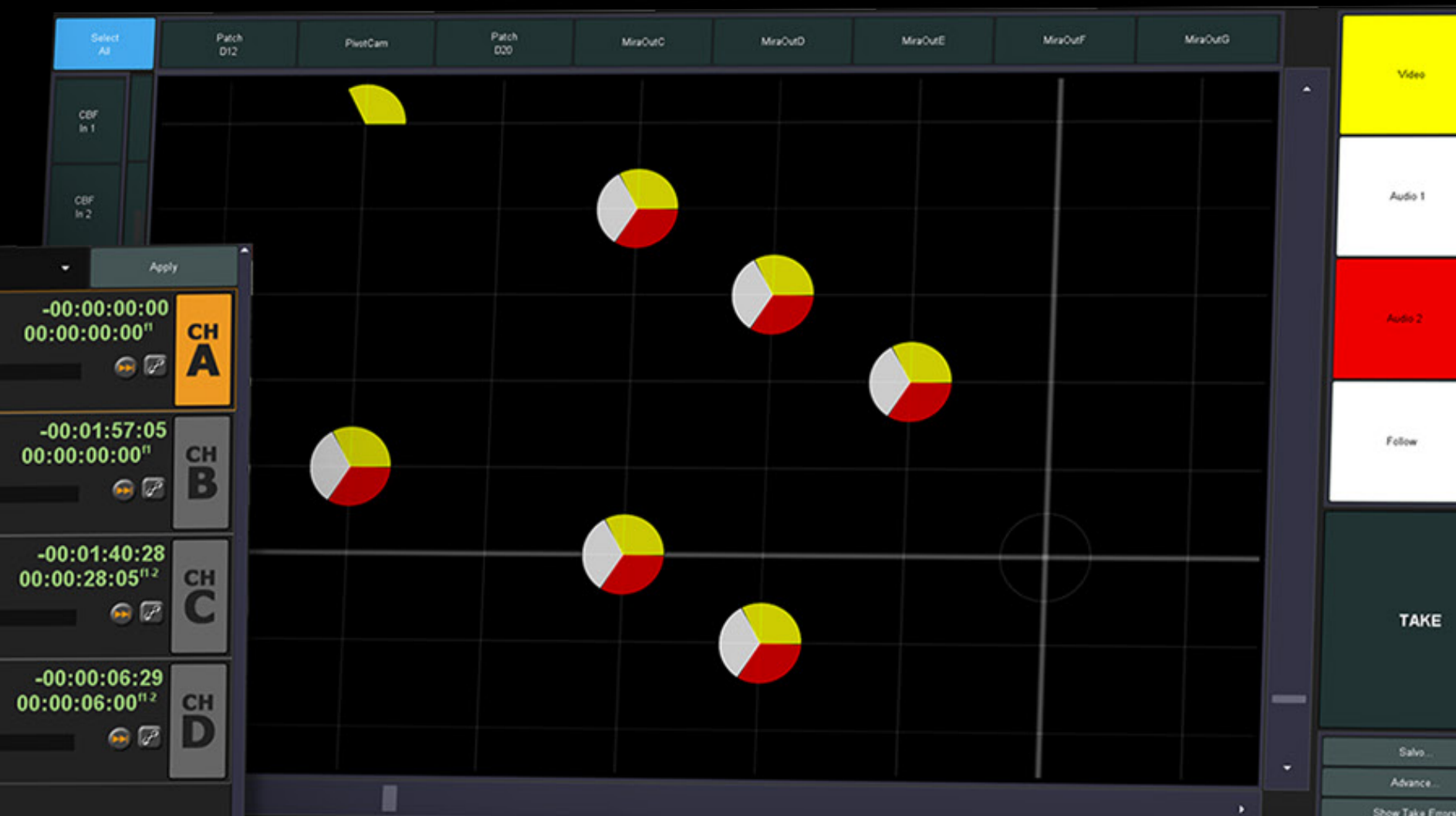
Memories



XPression

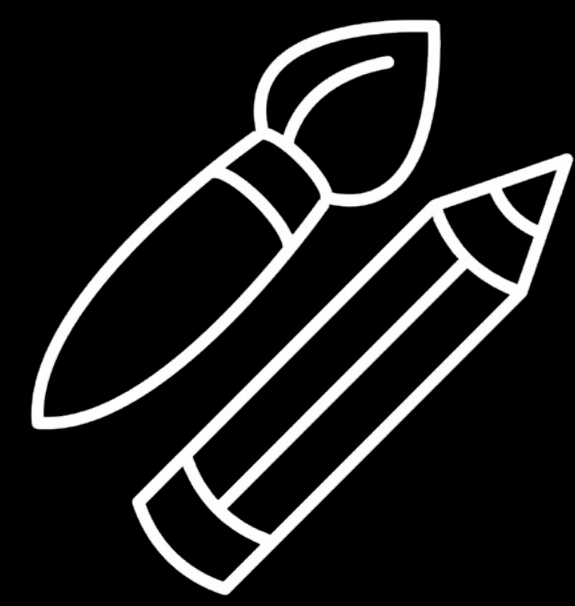


Tria+



Ultrix

# Key benefits



## Creative

TouchDrive™ allows you to produce your shows confidently, with controls that augment your capabilities instead of getting in your way.

High-resolution, rich color touch displays provide clear visual cues, boosting your confidence during operation. The ergonomic design reduces fatigue so you can focus your energy on producing a dynamic show.

With easily accessible Custom Control macros, auto-follow DashBoard panels, and tightly integrated device controls, complex production operations are easily accomplished with TouchDrive™.



## Business

Improved operational efficiency and reduced setup time will boost revenue while keeping costs down.

TouchDrive™ comes in various panel sizes, from the ultra portable TD1C to the uncompromising TD4. Choose the right one for your budget and production requirement.

TouchDrive™ works with most of Ross Video switchers, including all models of Graphite, Carbonite Ultra, Ultrix Carbonite and Ultrix Acuity, making it a sound investment for today and tomorrow.

Enjoy peace of mind as TouchDrive™ is backed by Ross Video's industry-leading support.



## Technical

TouchDrive™ is easy to set up and operate. The panel's built-in DashBoard eliminates the need for an external computer system.

Intuitive interfaces and auto-follow menus make it easy for operators of all levels. Confidently control the video switcher and other devices such as Tria video servers and XPression graphics systems. This allows confident delivery of complex, multi-device driven productions.

If you require assistance, technical support by phone or email is available 24/7, and it is free forever! Visit [support.rossvideo.com](http://support.rossvideo.com) for more info.

# Meet the TouchDrive family



Compatible with

Carbonite Mode



Ultrix Carbonite



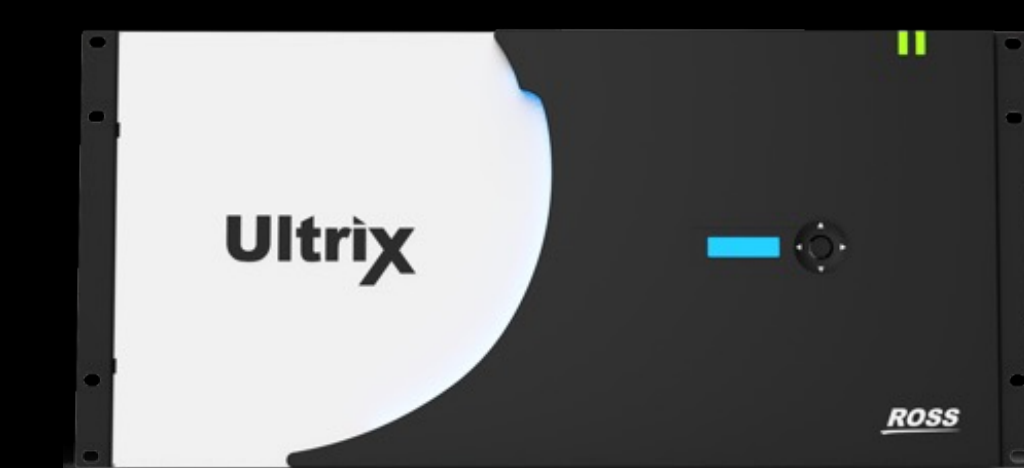
Carbonite Ultra 60



Carbonite Ultra



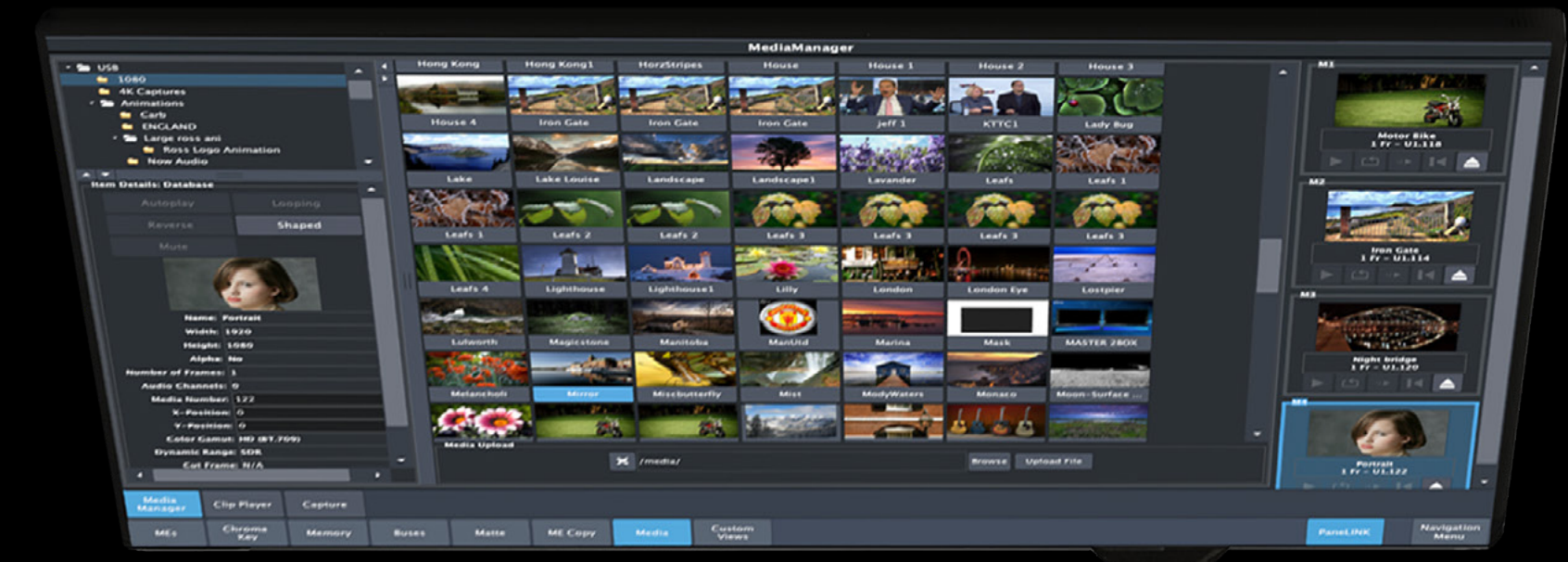
Graphite Series



Ultrix Acuity



# TD4 Features



## Advanced Memory Keypads

- Global or Local Memory Control
- Link multiple ME, MiniME, Canvas and Chroma-Key levels to a single Memory store or recall
- Override programmed PGM, EFF Dissolve, or patented MemoryAITM modes

## Exclusive Roll Clip Feature

- Automatically roll controlled Servers or Clip players when taken to air
- User-definable pre-roll durations

## Dedicated Keyer Control Per Row

- Touch Mnemonics with full keyer information and control
- Individual Keyer delegation and control buttons
- Dedicated Keyer Cut and Auto-Trans buttons
- Provides "at-a-glance" layer status

## Flex Control

- User Buttons with IPS displays
- View Custom Control Names / Memory Names
- Relative Menu

## On Panel Quick Menu

- Auto-follows to provide detailed control of attributes where knobs and fine-tuning are required

## 6 Axis Control

- New joystick design with control for 6 Axis
- 15 IPS Dynamic Control Buttons
- Dedicated Joystick Hold and Reset Buttons

## User Buttons

- Individually assignable:
  - Select Keyer types
  - Delegate ME or Mini ME Rows
  - Assign Memory or Custom Control Banks
  - Map direct-access Custom Controls

## Delegation Rows

- Delegate to control Key or Aux Bus Source assignments, Memory Recalls, or Custom Controls

## IPS Touch Displays

- Display Names and Icons for Sources, Memories and Custom Control Macros
- Access Menus, Device Controls, TouchMap™, and much more

## Panel Glow

- User-adjustable panel glow schemes and configurations for Keyers, MEs and more

## Vertical Row Display

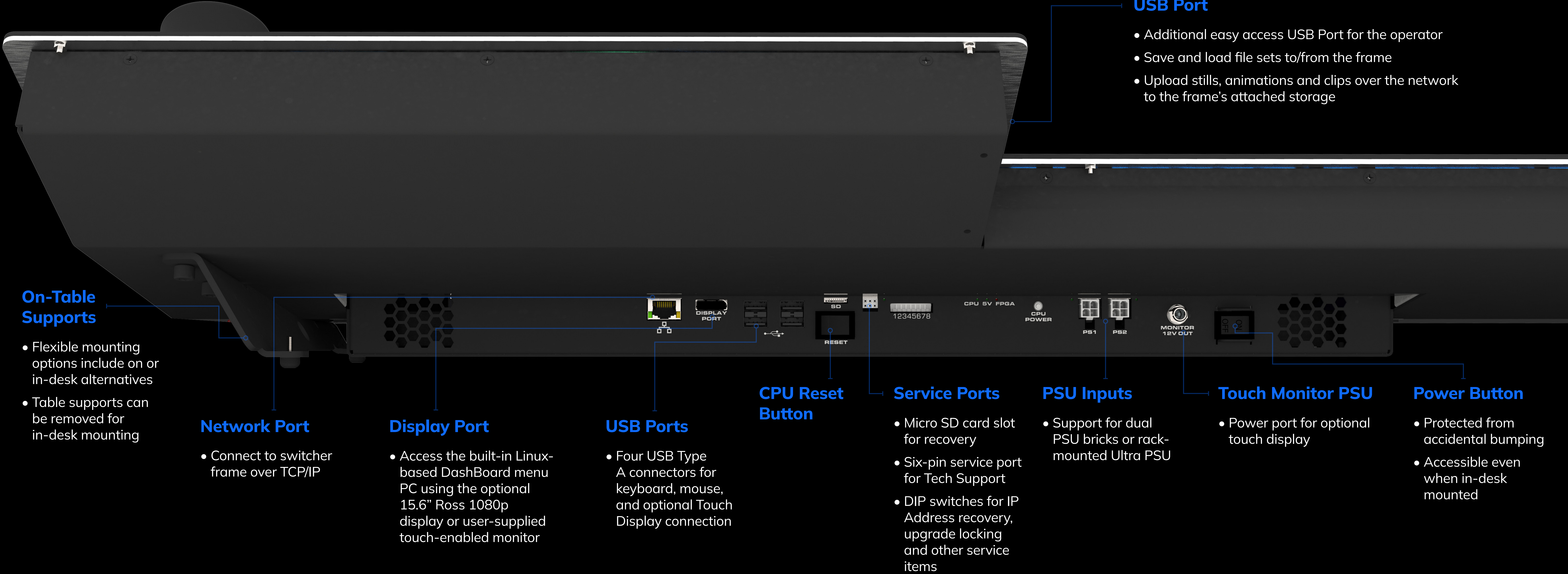
- Full touch control
- Access row functions or TouchMap™ control
- Quickly provides menu - or function - specific operator information

## Advanced Transition Control

- Industry-standard Next Transition layout
- Modify transition parameters using Touch display
- Three User Buttons for quick Memory or Custom Control assignment



# TD Features



### USB Port

- Additional easy access USB Port for the operator
- Save and load file sets to/from the frame
- Upload stills, animations and clips over the network to the frame's attached storage

### On-Table Supports

- Flexible mounting options include on or in-desk alternatives
- Table supports can be removed for in-desk mounting

### Network Port

- Connect to switcher frame over TCP/IP

### Display Port

- Access the built-in Linux-based DashBoard menu PC using the optional 15.6" Ross 1080p display or user-supplied touch-enabled monitor

### USB Ports

- Four USB Type A connectors for keyboard, mouse, and optional Touch Display connection

### CPU Reset Button

### Service Ports

- Micro SD card slot for recovery
- Six-pin service port for Tech Support
- DIP switches for IP Address recovery, upgrade locking and other service items

### PSU Inputs

- Support for dual PSU bricks or rack-mounted Ultra PSU

### Touch Monitor PSU

- Power port for optional touch display

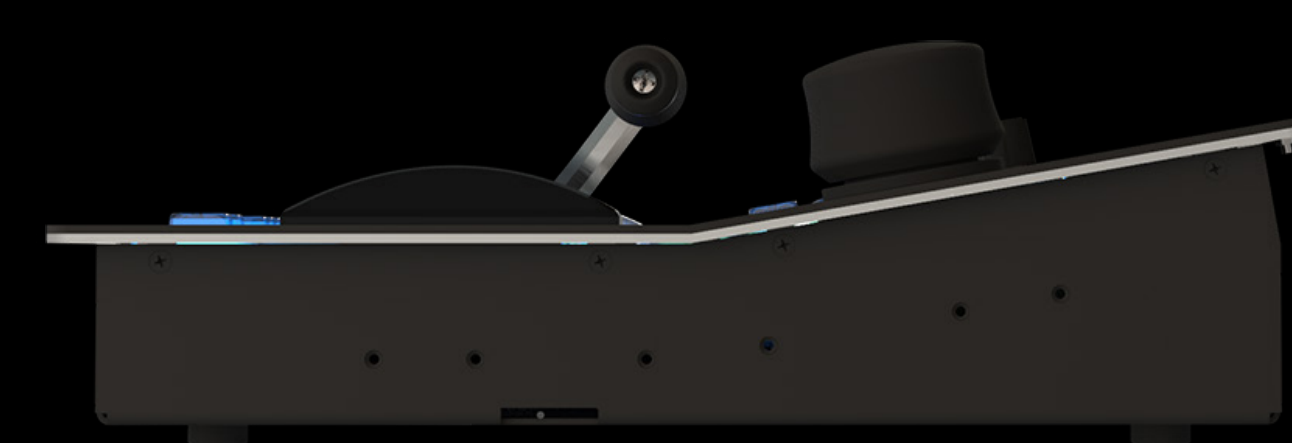
### Power Button

- Protected from accidental bumping
- Accessible even when in-desk mounted

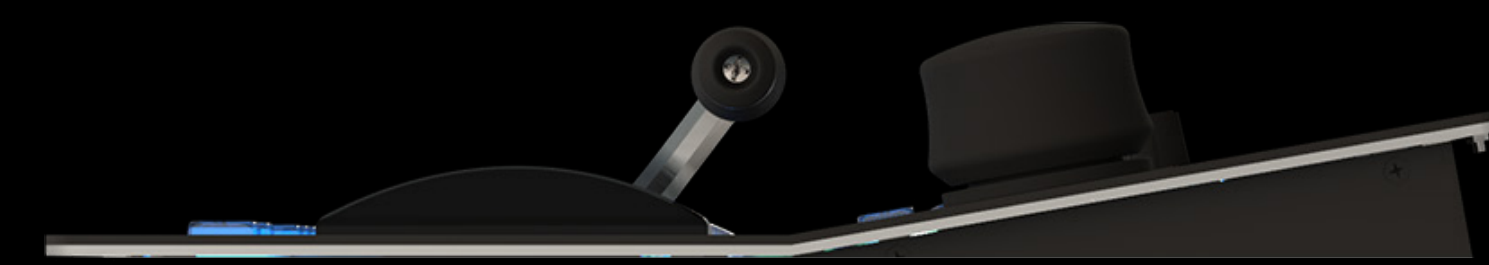
## TD1C



The exceptionally compact TD1C panel is “right-sized” for rack or in-desk mounting, making it a perfect addition to a fly-pack or small mobile unit. With 15 crosspoint buttons, on-board DashBoard, and exclusive multi-function touch displays, the TD1C provides the same professional-grade toolset as other TouchDrive™ panels while saving space and power.



On Desk

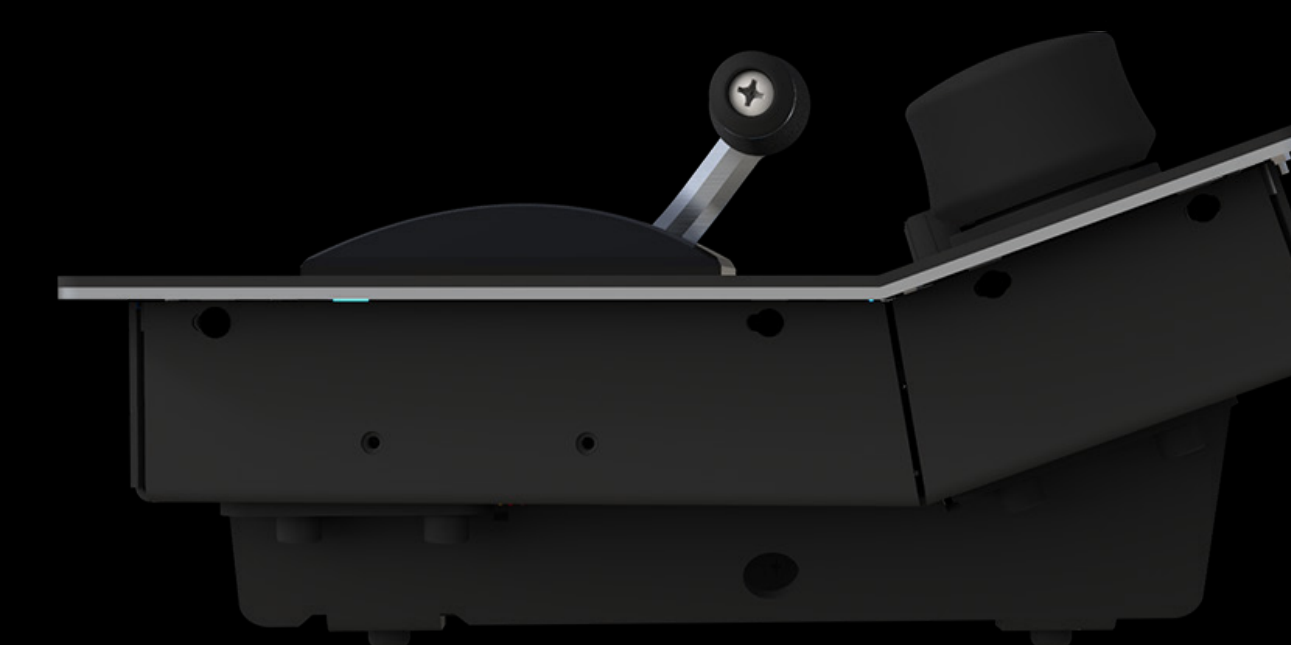


In Desk

## TD1



Like its larger cousin, the TouchDrive™ TD1 also features 15 crosspoint buttons, but only a single ME row. This compact panel provides the same functionality as larger TouchDrive™ panels, including the innovative 6-axis joystick and user-configurable buttons.



On Desk

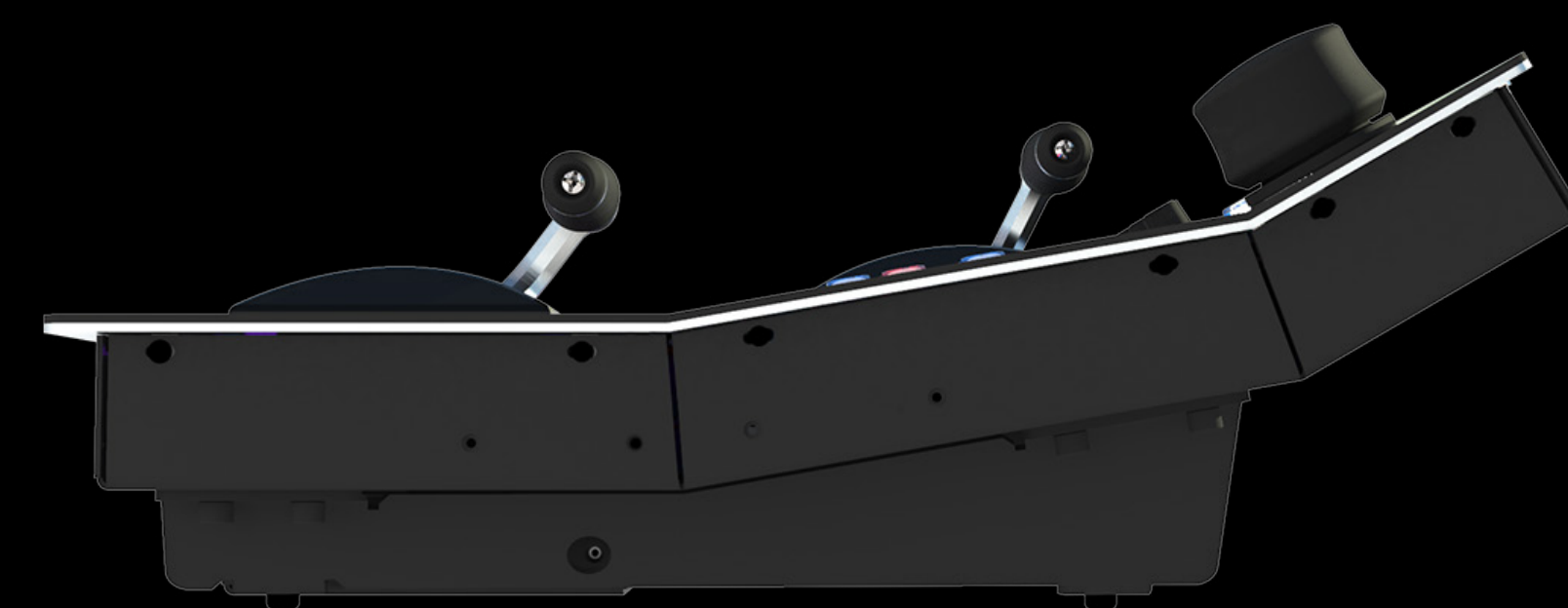


In Desk

## TD2



The TouchDrive™ TD2 features 15 buttons and 2 ME rows. With a smaller footprint than the TD2S, the TD2 still provides a Global Memory system and the ability to map Memories to individual bus row buttons for fast, accurate recall.



On Desk

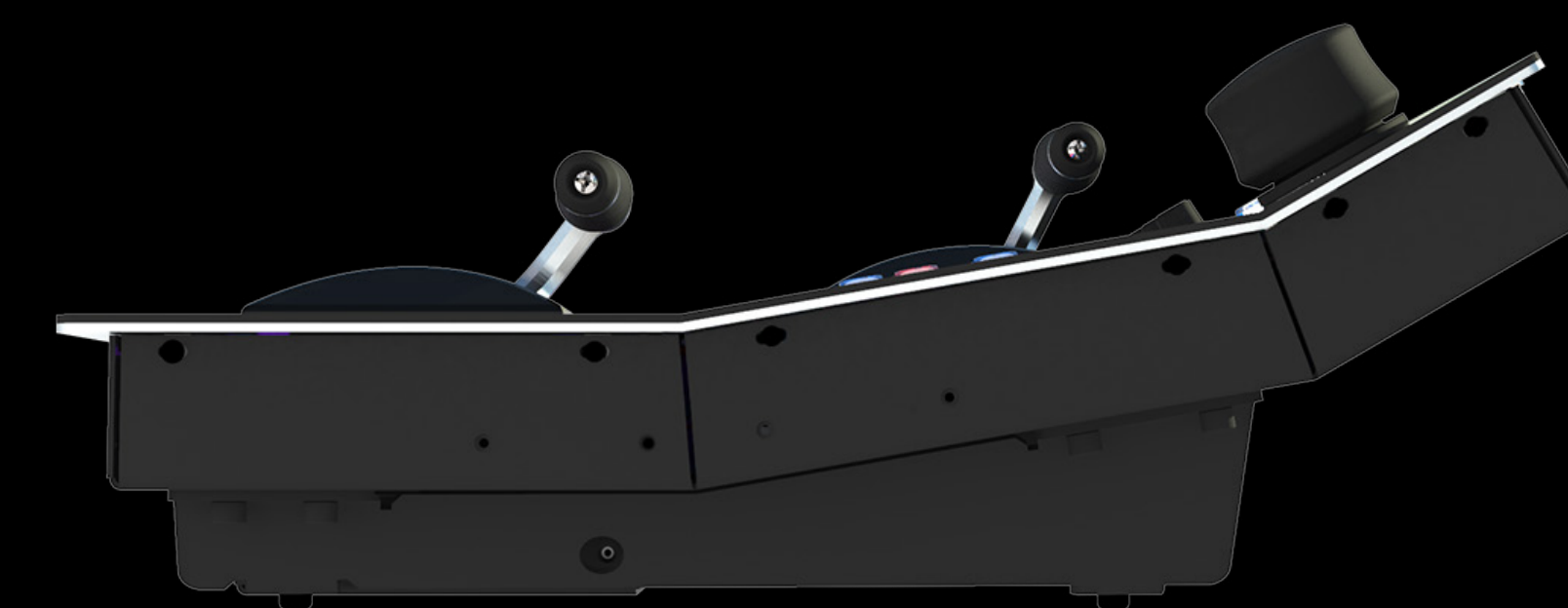


In Desk

## TD2S



The TouchDrive™ TD2S 25-button, 2 ME row panel is a more space-conscious version of the larger TD3S. Both the TD3S and TD2S also include individual Advanced Memory keypads on each ME row.



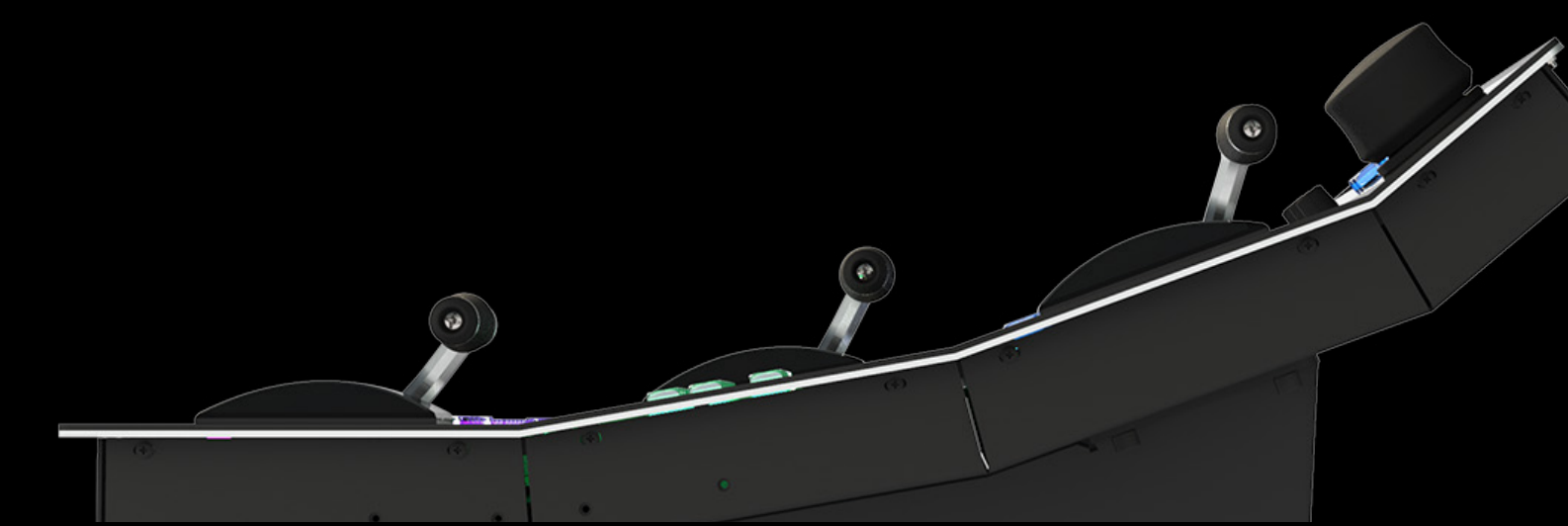
On Desk



In Desk

# TD3S

The beautiful new TouchDrive™ TD3S panel includes 25 crosspoint buttons and three full ME rows. Like all TouchDrive™ panels, the ergonomically designed TD3S features bright, easy-to-read multi-function touch displays and a built-in DashBoard computer.



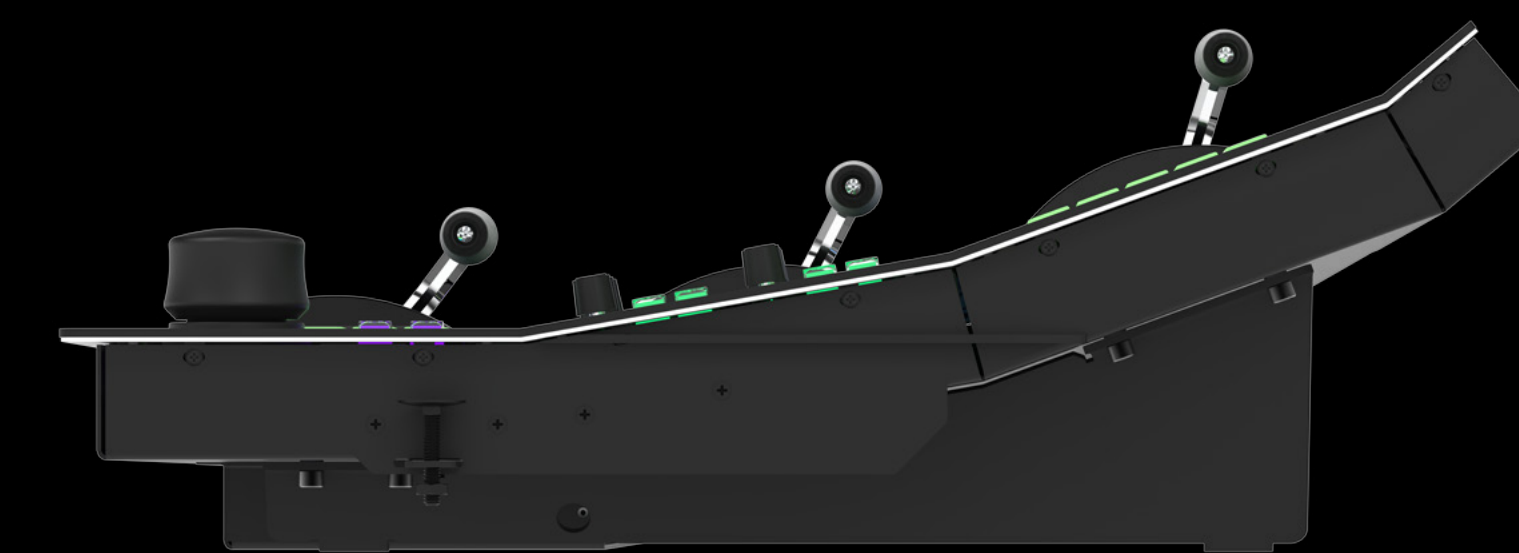
On Desk



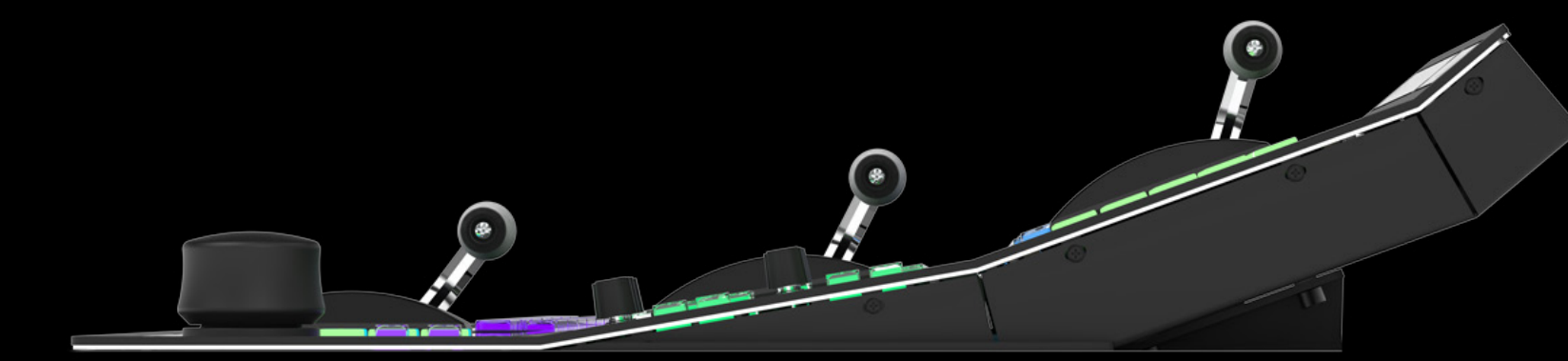
In Desk

# TD3

The TouchDrive™ TD3 panel includes 35 crosspoint buttons as well as three assignable control rows. The panel architecture is similar to the larger TD4 with additional displays on the left and moveable modules along the right side of the panel.



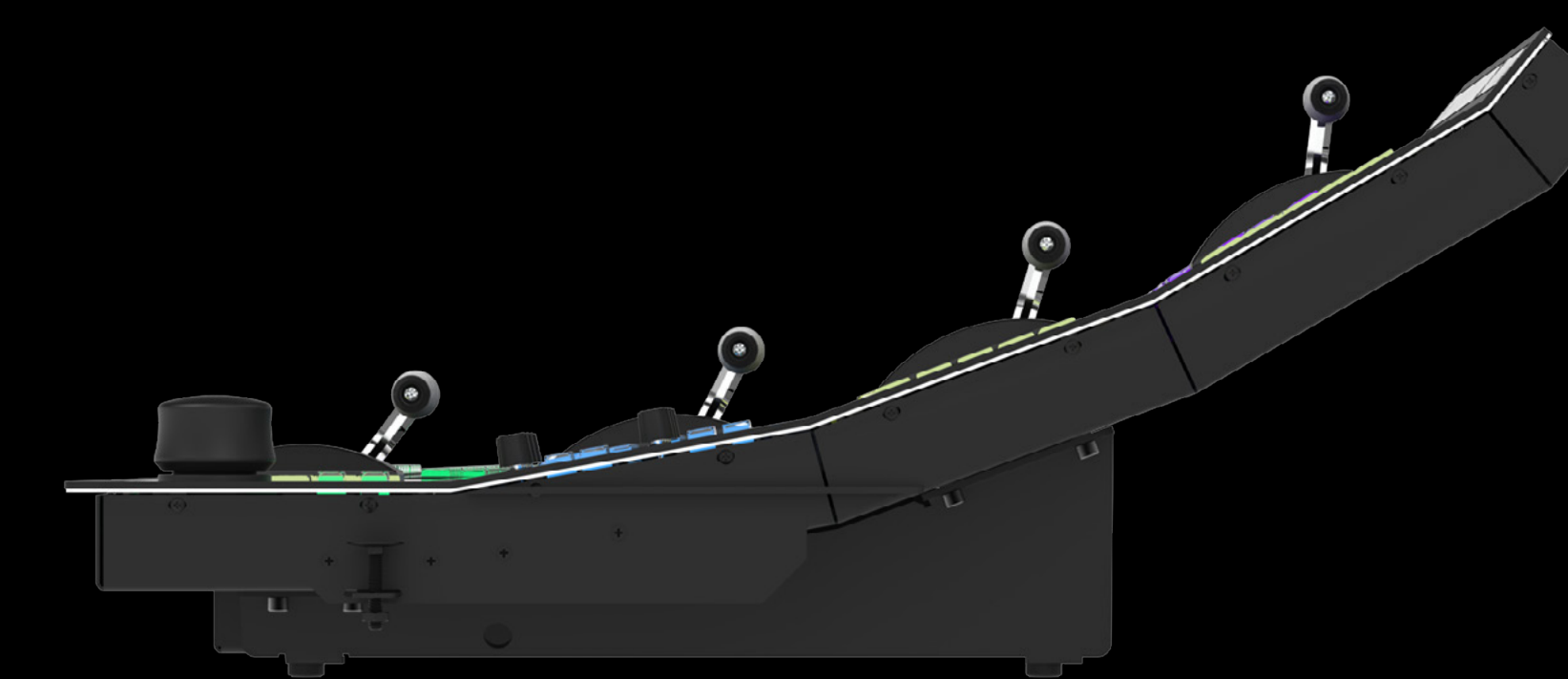
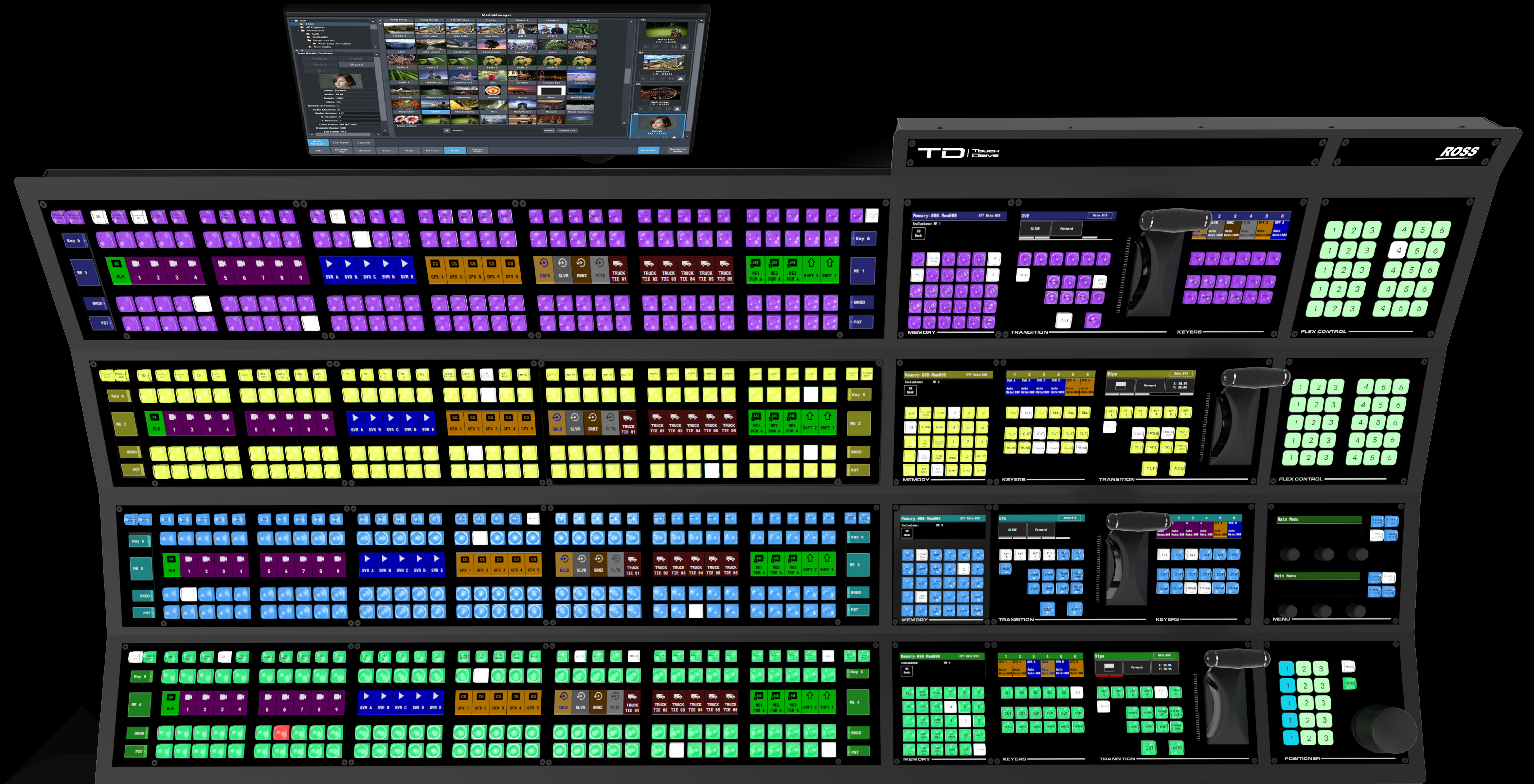
On Desk



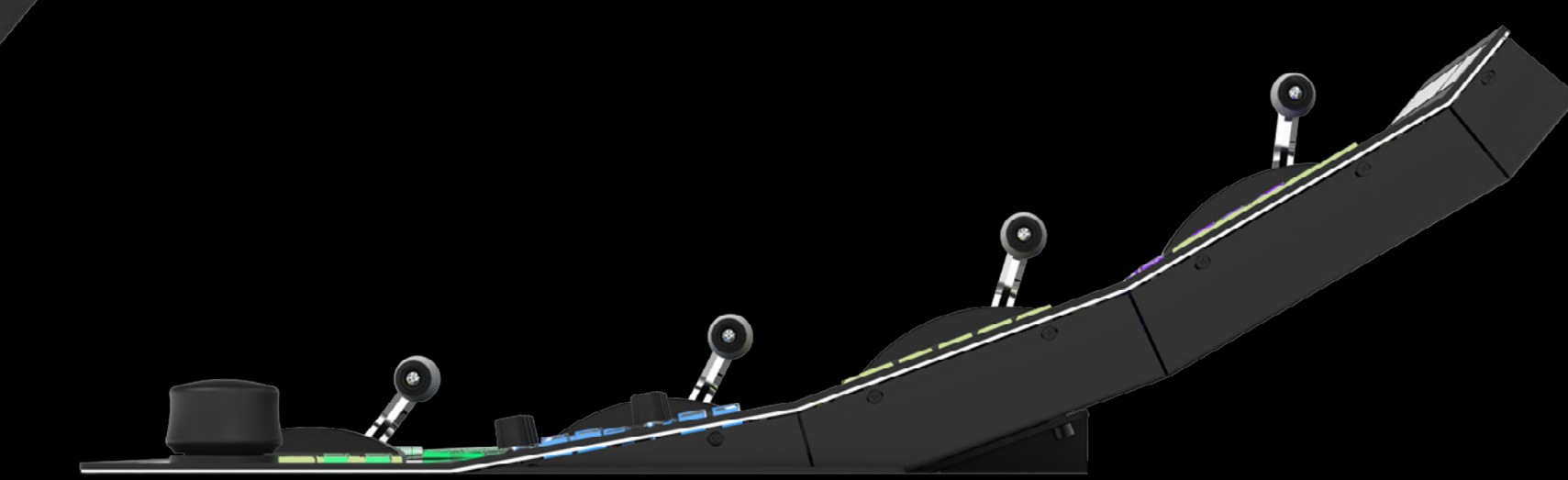
In Desk

# TD4

The stunning TouchDrive™ TD4 panel provides 35 crosspoint buttons and four full control rows. Additional touch-enabled displays arrayed along the left side of the panel provide increased control and moveable modules on the right side maximize operator convenience.



On Desk



In Desk

# Accessories



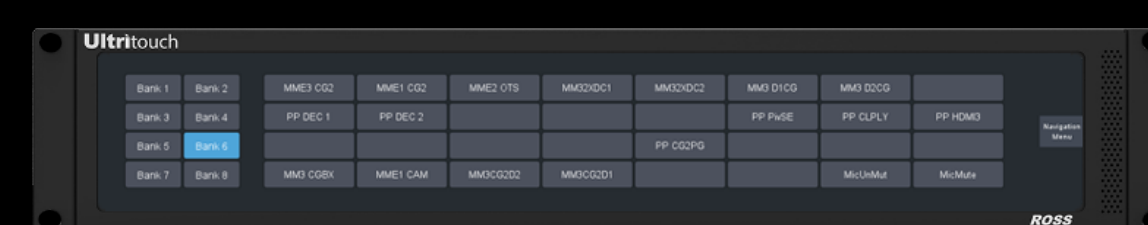
## Touch Display\*

A 15.6" high-resolution touchscreen is offered as an option. It is driven by touch, USB ports are available for keyboard and mouse control. Users can opt to provide their own screen. The TouchDrive™ panel has built-in power, display and control connections for the Touch Display.

\*Monitor arm is not provided.

## Power Supply Unit

Users can choose to power their TouchDrive™ panels using rack-mountable Ultripower or regular power bricks. Using Ultripower brings benefits such as DashBoard monitoring.



Ulritouch-2



Ulritouch-4

## Ulritouch Panels

Ulritouch panels can connect to multiple devices simultaneously. DashBoard Custom Panels can be loaded for tailored production control operation.



## SideShot-NG

SideShot-NG is the next-generation shotbox module inside a standalone SideBox control panel that connects to Acuity Production Switchers. The SideShot module offers 32 multi-colored, user-configured LCD buttons that can be mapped with features found in OverDrive and the production switcher.

# Aux panels

## RCP Series

RCP series Ethernet-connected control panels can be directly linked to your production switcher.

Multiple panels can be connected to service a variety of positions – engineering, shading, producer, etc.



RCP-ME



RCP-QE18



RCP-QE36

# Technical Specs / Comparison Table

TOUCHDRIVE	TD1C		TD1		TD2		TD2S		TD3S		TD3		TD4	
Direct Access Crosspoint Buttons	15		15		15		25		25		35		35	
Number of Rows	1		1		2		2		3		3		4	
Advanced Memory Keypad	x*		x*		x*		√		√		√		√	
Touch-enabled Display Mnemonics	√		√		√		√		√		√		√	
User Buttons	18		18		18 per row		28 per row		28 per row		28 per row		28 per row	
ShotBox Module	x†		x†		x†		x†		x†		√		√	
Joystick	√		√		√		√		√		√		√	
Built-in DashBoard Computer	√		√		√		√		√		√		√	
	<b>IN.</b>	<b>MM.</b>	<b>IN.</b>	<b>MM.</b>	<b>IN.</b>	<b>MM.</b>	<b>IN.</b>	<b>MM.</b>	<b>IN.</b>	<b>MM.</b>	<b>IN.</b>	<b>MM.</b>	<b>IN.</b>	<b>MM.</b>
Width	17.50"	444.5	28.29"	718.57	28.29"	718.57	41"	1041.4	41"	1041.4	58.36	1482.4	58.36	1482.4
Depth	12.91"	327.91	9.86"	250.44	15.73"	399.54	15.73"	399.54	21.23"	539.24	20.22	513.6	25.37	644.4
Ambient Temperature Range	Operating: 0 – 40°C (32 – 104°F) Storage: -20 – 85°C (-4 – 185°F)													
Power Supply	1 PSU as Standard (+1 PSU for Redundancy)										2 PSU as Standard (+2 PSU for Redundancy)			
Input Voltage	100 – 120V~, 200 – 240V~, 47 – 63Hz													

\*Memory row assignment allows memory recalls using key source selector buttons.

Note: These dimensions are provided as a guide. Scale DXF/CAD drawings of the TouchDrive™ panels are available from Ross Video's TouchDrive™ webpage.

† External showbox available (SideShot-NG).





Ross Video has a complete range of technical services available to ensure that your TouchDrive™ Control Panel deployment is a success.

**Operational Training** can be provided at Ross Video, on-site, or over the web. Experienced Ross operators will teach your staff to get the most out of your new system and enhance your productions.

**Commissioning** is a service to help get your production system properly configured, connected, and installed. This service is performed by factory-trained Ross technical staff.

**Technical Training** can be provided at Ross Video, on-site, or over the web. Technical training will teach your engineering staff the technical details of the system you have purchased. System configuration, interfaces, databases, and routine maintenance procedures are some of the topics covered.

TouchDrive™ comes standard with a 1 year comprehensive warranty. Extended Warranties on hardware and software maintenance are available for an annual fee and also include enhanced Service Level Agreements.

Technical advice is available on-line, by telephone, or email to Ross Video – Included for the life of your system.

### Contact Us

Global: +800 1005 0100

North America: 1-844-652-0645

Email: [solutions@rossvideo.com](mailto:solutions@rossvideo.com)

Technical Support

Emergency: +1 613 349-0006

Email: [techsupport@rossvideo.com](mailto:techsupport@rossvideo.com)



### Ross Video

#### Solutions

Broadcast & Production  
Augmented Reality & Virtual Sets  
Sport & Live Events  
Legislative  
Mobile Production  
House of Worship  
Education  
Corporate

#### Products

Production Switchers  
Motion Graphics & Clip Servers  
Replay & Production Servers  
Robotic & Camera Systems  
Control Systems  
Routing Infrastructure  
Signal Processing Infrastructure  
News, Live & Social Production Management  
Asset Management & Storage

#### Services

Creative Services  
Mobile Production

© 2023 Ross Video Limited

Released in Canada.

No part of this brochure may be reproduced in any form without prior written permission from Ross Video Limited.

This brochure is furnished for informational use only. It is subject to change without notice and should not be construed as commitment by Ross Video Limited. Ross Video Limited assumes no responsibility or liability for errors or inaccuracies that may appear in this brochure.

TouchDrive\_Brochure\_231127

[rossvideo.com](http://rossvideo.com)